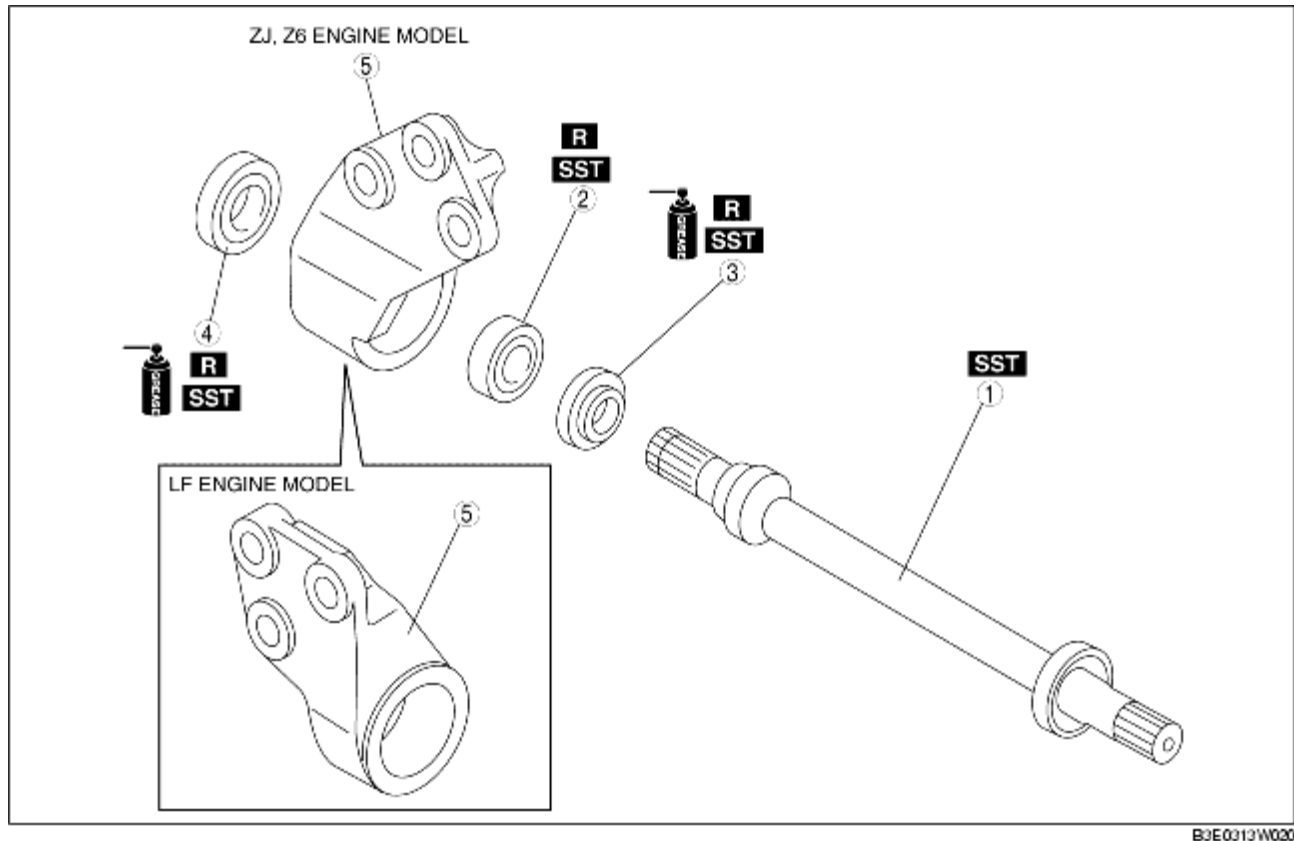


## JOINT SHAFT DISASSEMBLY/ASSEMBLY

B3E031325700W03

1. Disassemble in the order indicated in the table.
2. Assemble in the reverse order of disassembly.



B3E0313W030

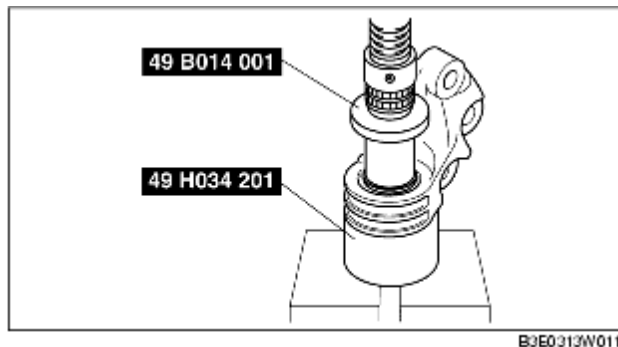
1	Joint shaft (See <a href="#">Joint Shaft Disassembly Note.</a> ) (See <a href="#">Joint Shaft Assembly Note.</a> )
2	Bearing (See <a href="#">Bearing Disassembly Note.</a> ) (See <a href="#">Bearing Assembly Note.</a> )
3	Dust seal (LH) (See <a href="#">Dust Seal (LH) Assembly Note.</a> )
4	Dust seal (RH) (See <a href="#">Dust Seal (RH) Assembly Note.</a> )
5	Bracket

### Joint Shaft Disassembly Note

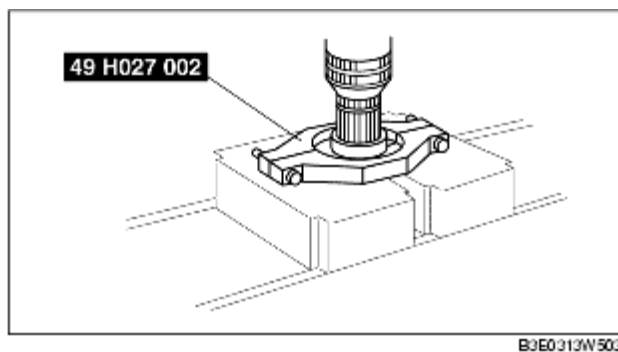
1. Remove the joint shaft using a press.

## Bearing Disassembly Note

1. Remove the bearing and the dust seal (RH/LH) using the **SSTs**.

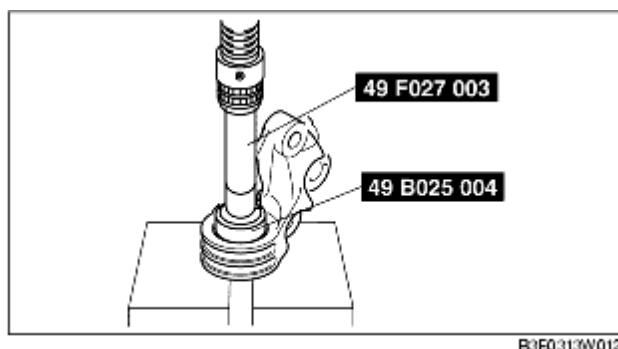


2. If the bearing remains on the joint shaft, set the **SST** and joint shaft to the press.



## Dust Seal (RH) Assembly Note

1. Apply grease to a new dust seal lip.
2. Install the dust seal (RH) using the **SSTs**.

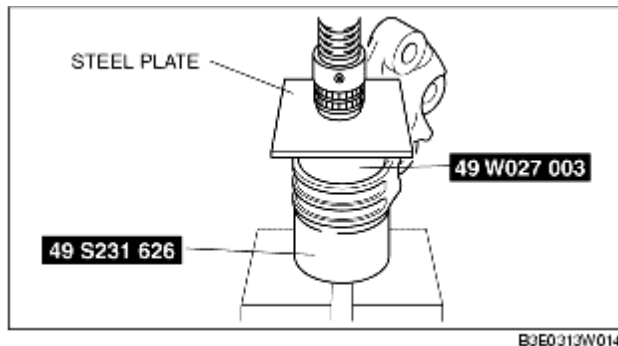


## Bearing Assembly Note

1. Install a new bearing using the **SSTs**.

## Dust Seal (LH) Assembly Note

1. Apply grease to a new dust seal lip.
2. Install a new dust seal (LH) using the steel plate and the **SSTs**.



## Joint Shaft Assembly Note

1. Press fit the joint shaft using the **SST** and a press.

